



# PILBARA MINERALS LIMITED

ABN 95 112 425 788

16 June 2010

The Manager  
Company Announcements Office  
Australian Securities Exchange Ltd  
4th Floor, 20 Bridge Street  
SYDNEY NSW 2000

## AIRBORNE GEOPHYSICS PROGRAM COMMENCES ON WEST PILBARA PROJECT

The Board of Directors of Pilbara Minerals Limited ("Pilbara" or the "Company") (ASX Code "PLS") would like to announce that it has let two contracts for airborne geophysical surveys. These surveys will cover virtually the entire extent of the Company's exploration licence holdings which located in the West Pilbara region of north-western Western Australia. Please refer Figure 1.

Pilbara holds title to 13 granted exploration licences which together total approximately 1,790 square kilometres. The project consists of four groups of exploration licences that are situated within an area extending from about 70km southwest of Karratha to approximately 110km southeast of Karratha.

The Company's exploration targets are blind occurrences of volcanogenic massive sulphides (potentially Cu-Zn-Au-Ag mineralised), layered basic intrusives (potentially Ni-Cu-PGM mineralised) and magnetite-bearing sequences (potentially iron mineralized) typically hosted within the Archaean volcano-sedimentary sequences that lie below extensive cover of overlying and younger Fortescue Group rocks and river alluvium.

The major geophysical survey is a helicopter-borne VTEM electromagnetic and magnetic survey which is being undertaken by GeoTech Airborne Pty Ltd of Malaga, WA. It will cover almost the full extent of 12 exploration licences (approximately 1,565 square kilometres) on flight lines 400m apart. Operations are commencing this week and are expected to complete in about five weeks.

An airborne magnetic and radiometric survey by fixed-wing aircraft at 200m line spacing is being carried out by Fugro Airborne Surveys Pty Ltd of Osborne Park, WA. It is approximately 155 square kilometres in extent, being the entire area of the Company's westernmost exploration licence. This survey also is commencing this week and is expected to take four days to complete.

Programme planning, survey quality control and geophysical interpretation is being carried out by Southern Geoscience Consultants Pty Ltd, Belmont, WA.

ADDRESS SUITE 9, 1200 HAY STREET, WEST PERTH WA 6005  
POSTAL PO BOX 281, WEST PERTH WA 6872

TELEPHONE +61 8 6460 4960 FACSIMILE +61 8 9324 3045 WEBSITE [WWW.PILBARAMINERALS.COM.AU](http://WWW.PILBARAMINERALS.COM.AU)



# PILBARA MINERALS LIMITED

ABN 95 112 425 788

On completion of the surveys, geophysical and geological interpretations will be carried out and results reported in due course.

Yours faithfully,

Mathew Walker  
Chairman

**For further information please contact:**

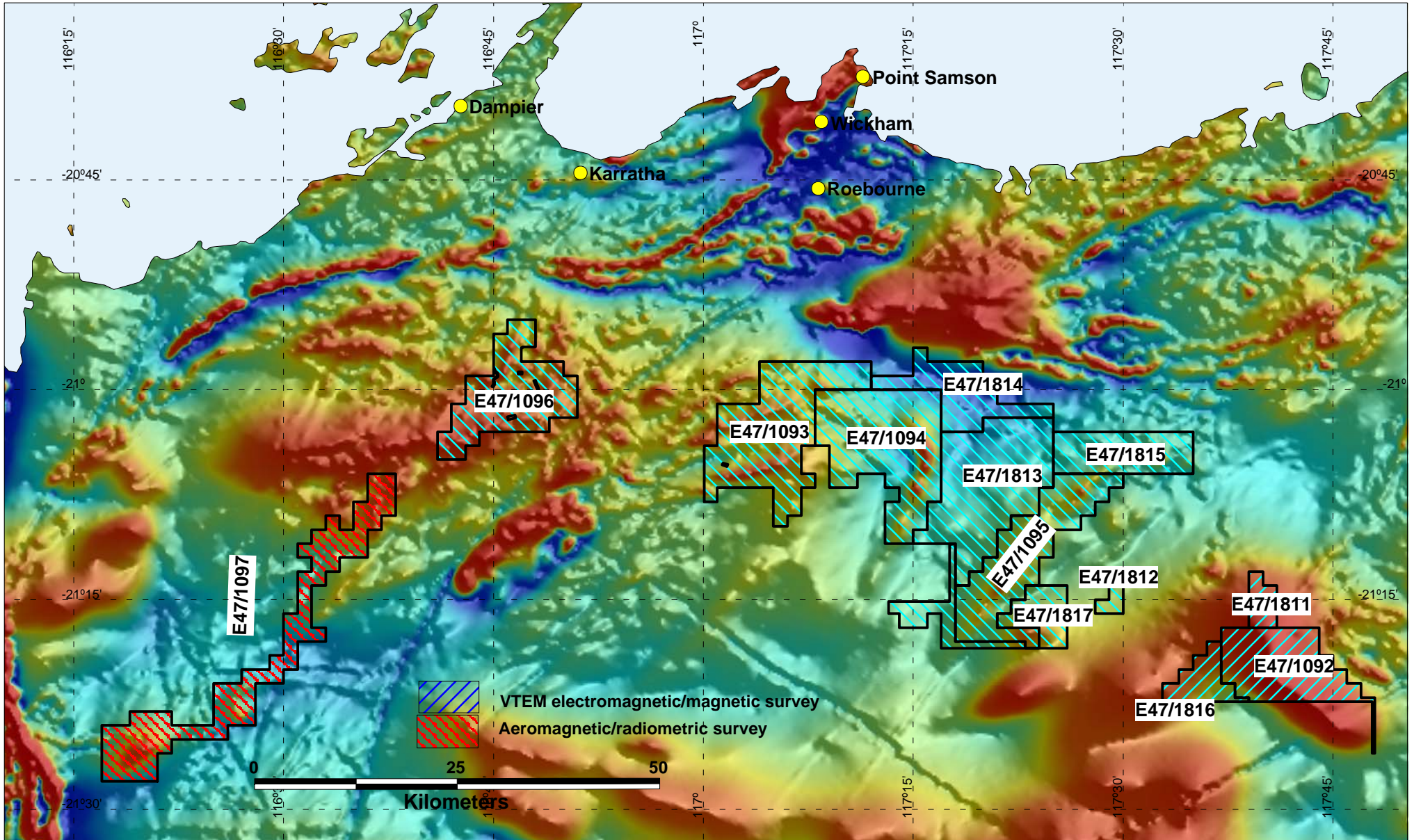
James Robinson, Company Secretary, Pilbara Minerals Limited, Tel: (08) 6460 4960

*The information pertaining to the technical content of this announcement has been reviewed by Mr. Robert (Bob) Adamson, B.Sc., M.Sc. (Hons Geol), MAusIMM, CP (Geo), who is a member of the Australasian Institute of Mining and Metallurgy. Mr. Adamson is employed by the Company as Technical Manager and has sufficient experience which is relevant to the style of mineralisation and type of deposit under consideration and to the activity which he is undertaking to qualify as a Competent Person as defined in the 2004 Edition of the 'Australasian Code for Reporting of Exploration Results, Mineral Resources and Ore Reserves'. Mr. Adamson consents to the inclusion in the announcement of the technical information in the form and context in which it appears.*



ADDRESS SUITE 9, 1200 HAY STREET, WEST PERTH WA 6005  
POSTAL PO BOX 281, WEST PERTH WA 6872

TELEPHONE +61 8 6460 4960 FACSIMILE +61 8 9324 3045 WEBSITE [WWW.PILBARAMINERALS.COM.AU](http://WWW.PILBARAMINERALS.COM.AU)



PILBARA MINERALS LIMITED

WEST PILBARA PROJECT - Exploration Licences & Airborne Geophysical Surveys

16 JUNE 2010